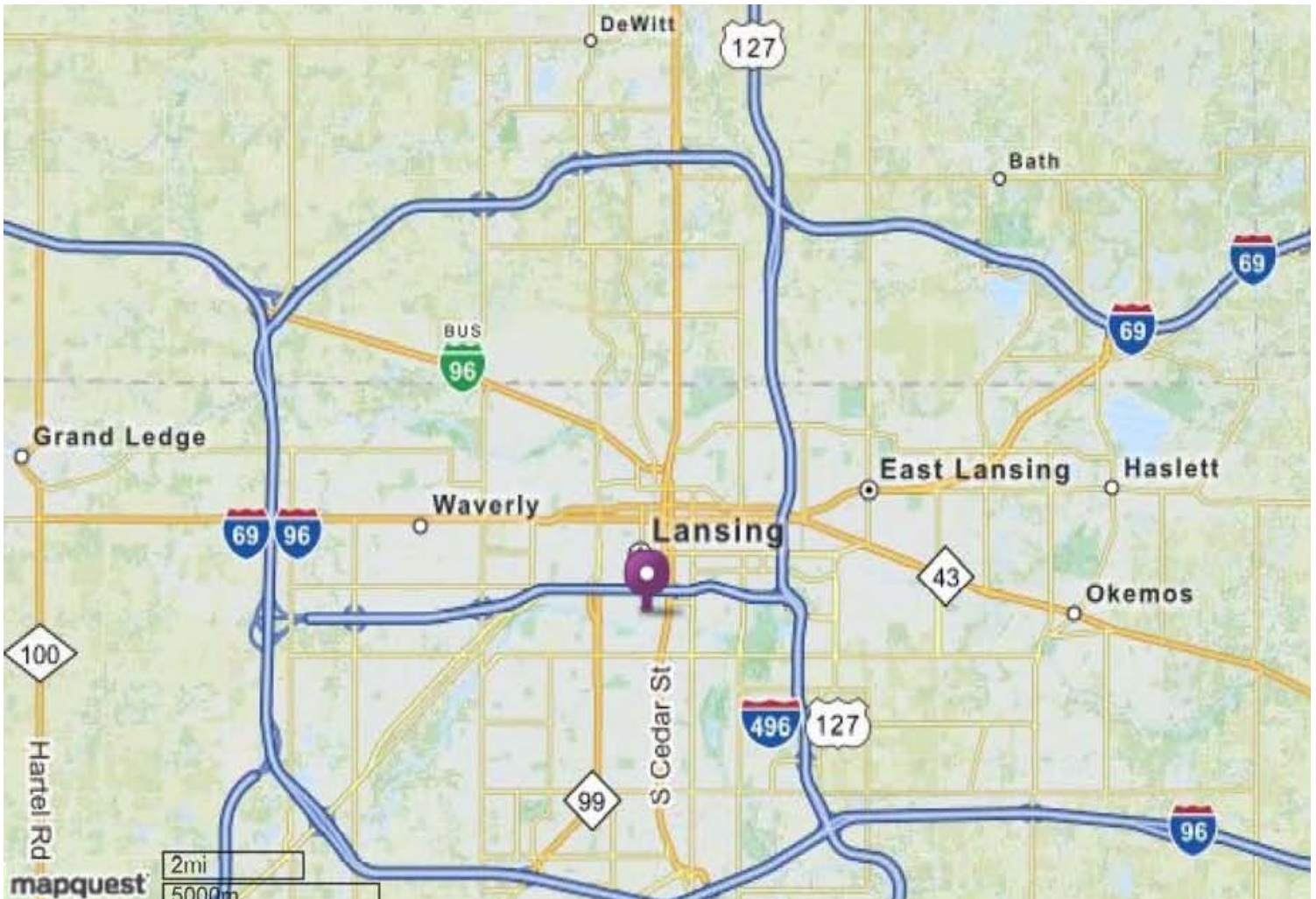




sameyde
MANAGEMENT

1134 S. Washington



LEASE OPTION

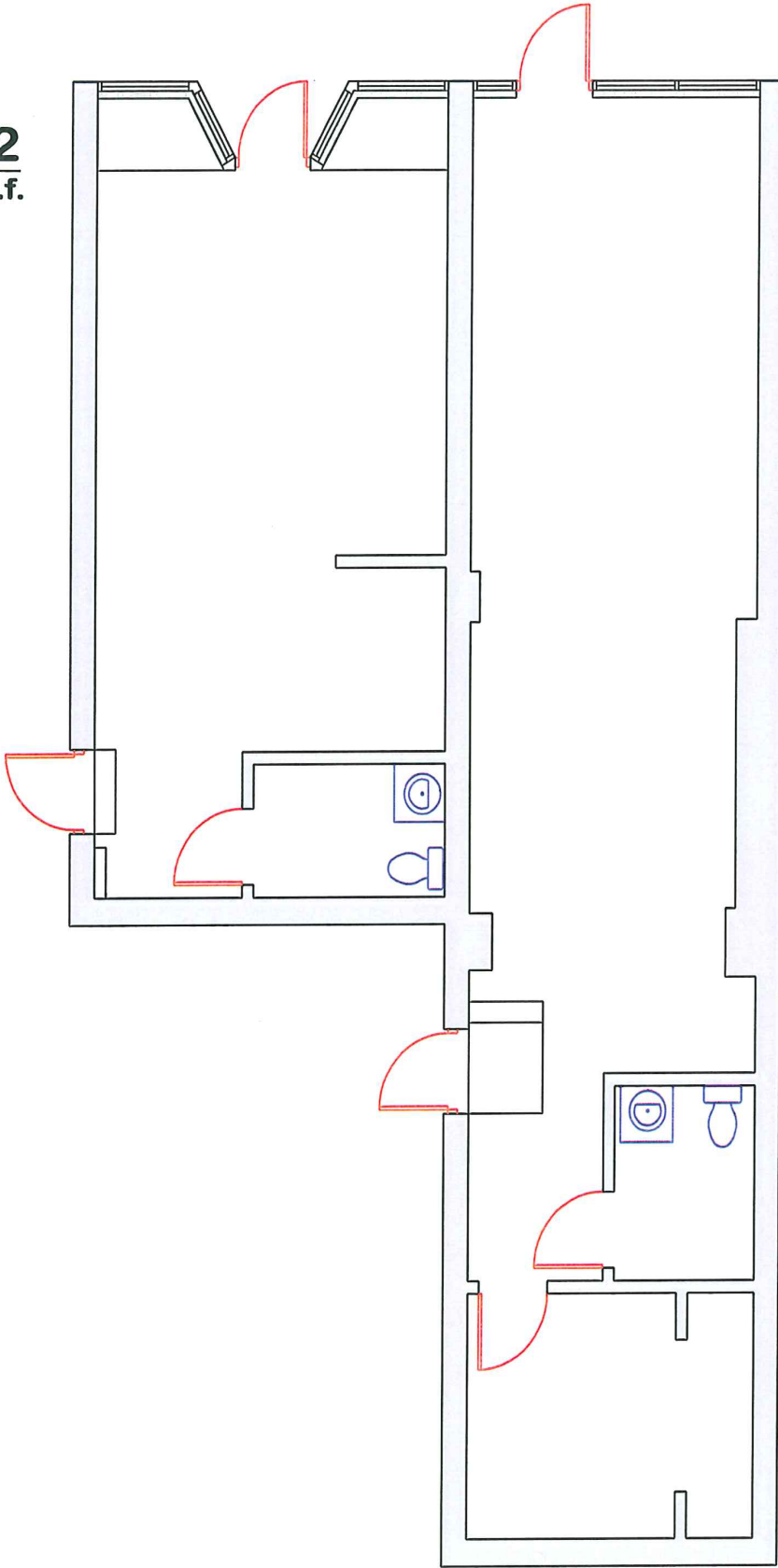
This 1,445 square foot building is just south of I-496. It is in close proximity to GM's Lansing Grand River Assembly Plant & Lansing Board of Water & Light REO Town Headquarters and Cogeneration Plant.

BUILDING HIGHLIGHTS

- 1,445 sqft
- Just South of I-496
- Close proximity to Capital

1132
566 s.f.

1134
846 s.f.



**SAM
HYDE**
MANAGEMENT

2501 COOLIDGE
SUITE 501
EAST LANSING, MI 48823
PHONE: 517.333.3430
FAX: 517.333.6725

**S. WASHINGTON
PLAZA**

**LANSING
MICHIGAN**

FLOOR PLAN

DATE: 10/5/12
DR BY: CJR
SCALE: NTS

