



sameyde  
MANAGEMENT

3001 COOLIDGE



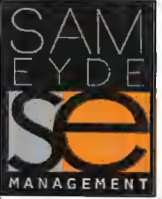
## LEASE OPTIONS

This highly visible Class A Office building is the epitome of the old adage LOCATION-LOCATION-LOCATION. Its central location (just two blocks east of the US-127 and Lake Lansing Road interchange), offers easy access to the entire State Highway system, the local and state government office complex (6 miles), Capital City Airport (3.5 miles), and Michigan State University (3 miles). It is ideally situated within walking distance of multiple supermarkets, restaurants, hotels, banks, and less than a mile from the new Eastwood Town Center, which includes over 45 national retail stores, a multiplex theatre, and six national restaurant chains.

## BUILDING HIGHLIGHTS

- Dynamic Entrances High End Finishes
- Adjacent to a protected wetland
- Free Convenient on-site Parking

Please Contact Sam Eyde at:  
[sameyde@sameyde.com](mailto:sameyde@sameyde.com) or 517.333.3430



2501 COOLIDGE  
SUITE 501  
EAST LANSING, MI 48823  
PHONE: 517.333.3430  
FAX: 517.333.8725

# EXHIBIT B-2

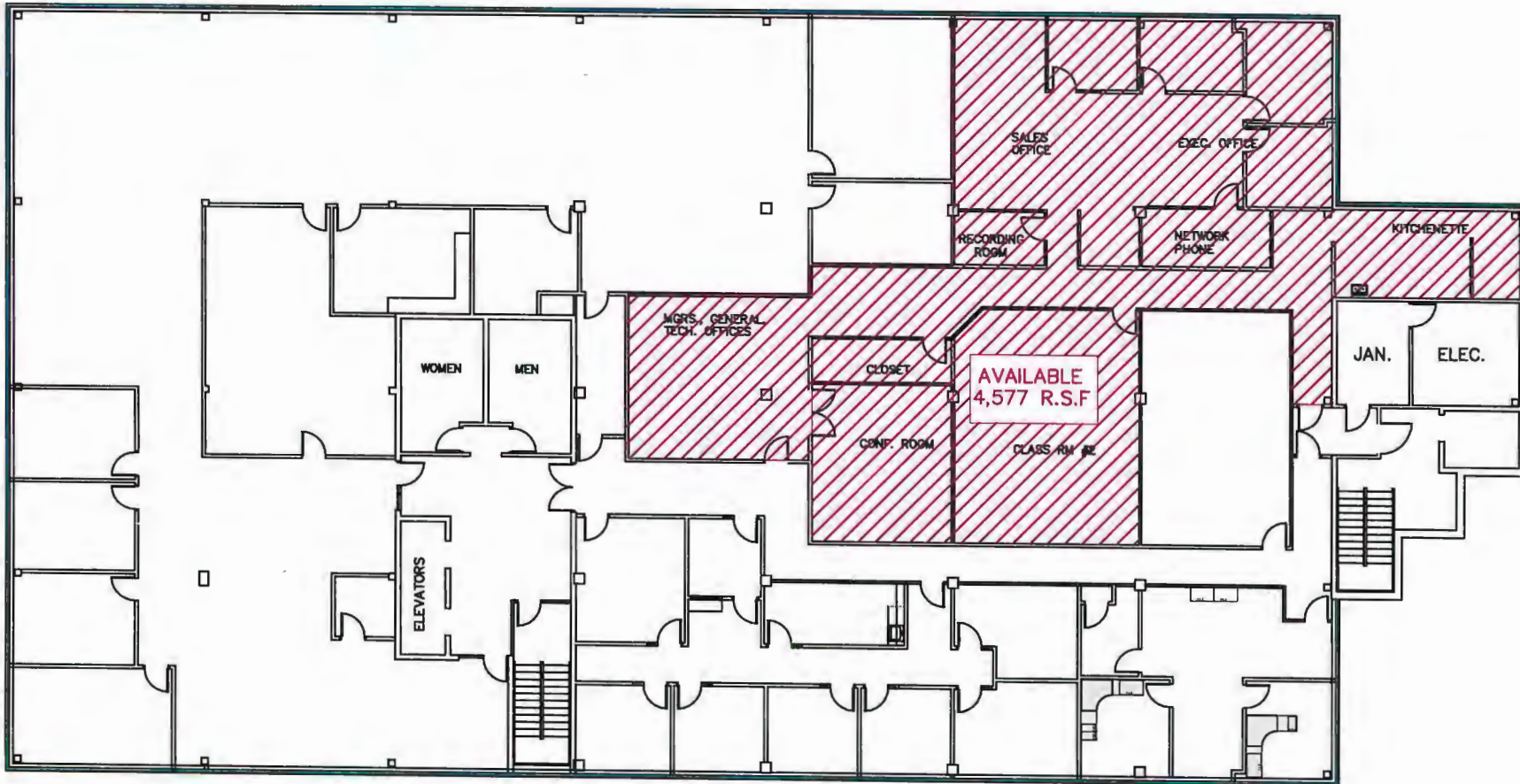
3001  
COOLIDGE  
ROAD  
EAST  
LANSING  
MICHIGAN  
48823

4 th LEVEL  
FLOOR PLAN

DATE: 7/8/15

DR. BY: CJR

SCALE: 1/16





# 3001 LOCATION

