



sameyde
MANAGEMENT

Shiawasse/Larch



Opportunity Zone

This 6.5 acre (approx.) site is located one block north of Michigan Ave. and is currently zoned for office/light industrial use with the ability for multi-family.

It is in close proximity to Downtown Lansing.

This build to suit site can accommodate a mixed use complex.

PROPERTY HIGHLIGHTS

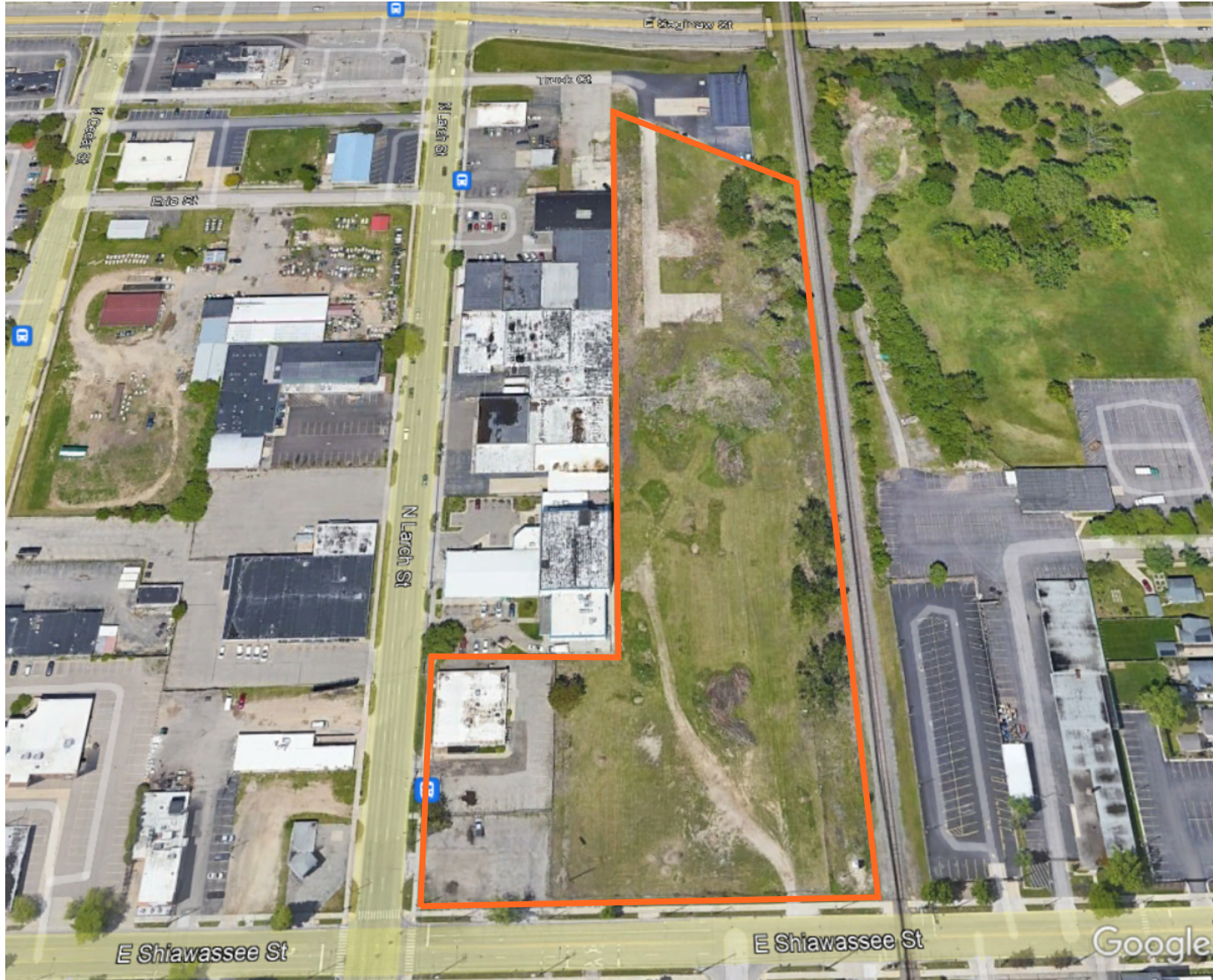
- ~Dedicated Opportunity Zone
- ~Zoned for Office/Retail/Light Industrial
- ~Close Proximity to Downtown Lansing
- ~Build to Suit up to 100,000 SF office/industrial

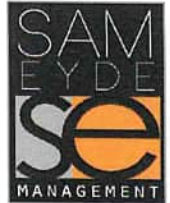
Please Contact Sam Eyde:
sameyde@sameyde.com or 517.333.3430



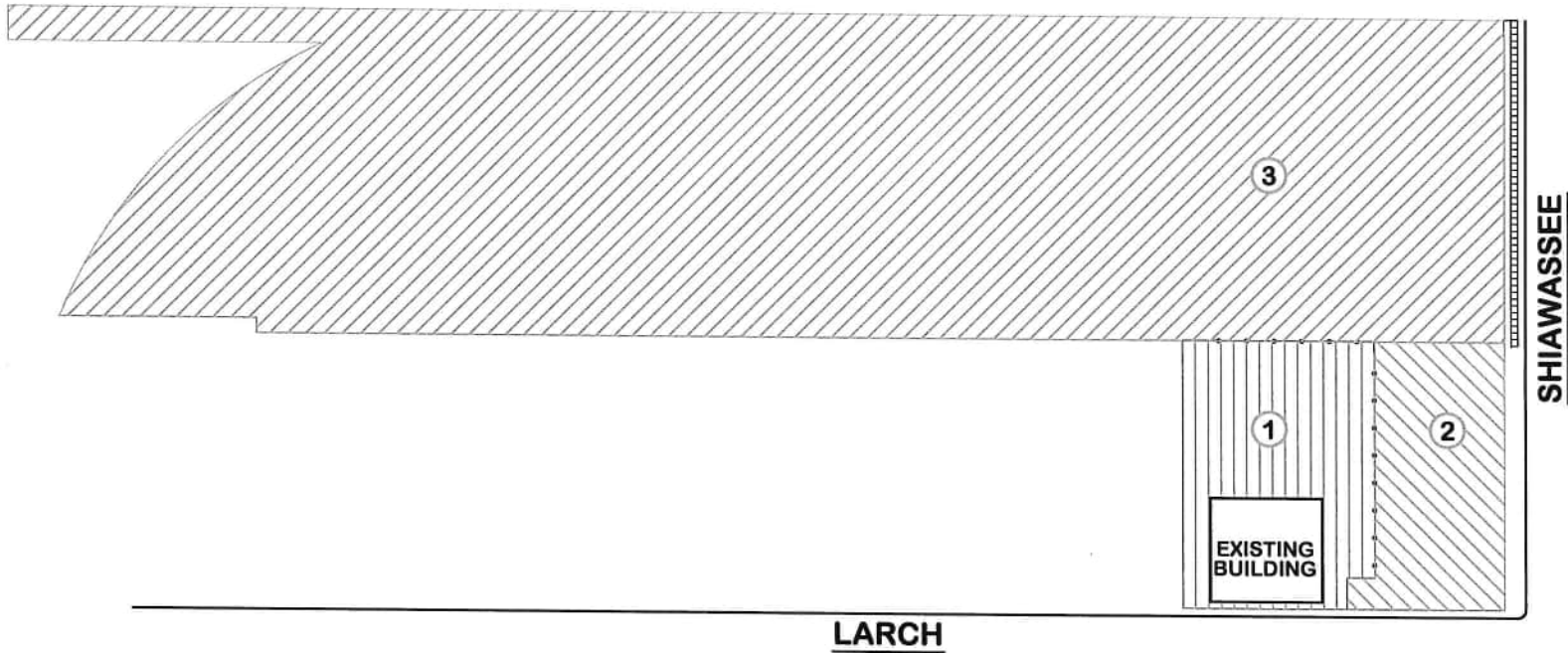
sam^{eyde}
MANAGEMENT

Shiawassee/Larch





2501 COOLIDGE
SUITE 501
EAST LANSING, MI 48823
PHONE: 517.333.3430
FAX: 517.333.6725



<u>AREA</u>	<u>SQUARE FOOTAGE</u>
1	19,326
2	27,288
3	236,324
TOTAL	282,938 or 6.50 acres



SITE PLAN AREA CALCULATIONS ARE APPROX. - SHOULD BE SURVEYED

**PROPOSED
DRAWING
FOR:**

SHIAWASSEE &
LARCH

DATE: 11/4/22

DR. BY: CJR

SCALE: None