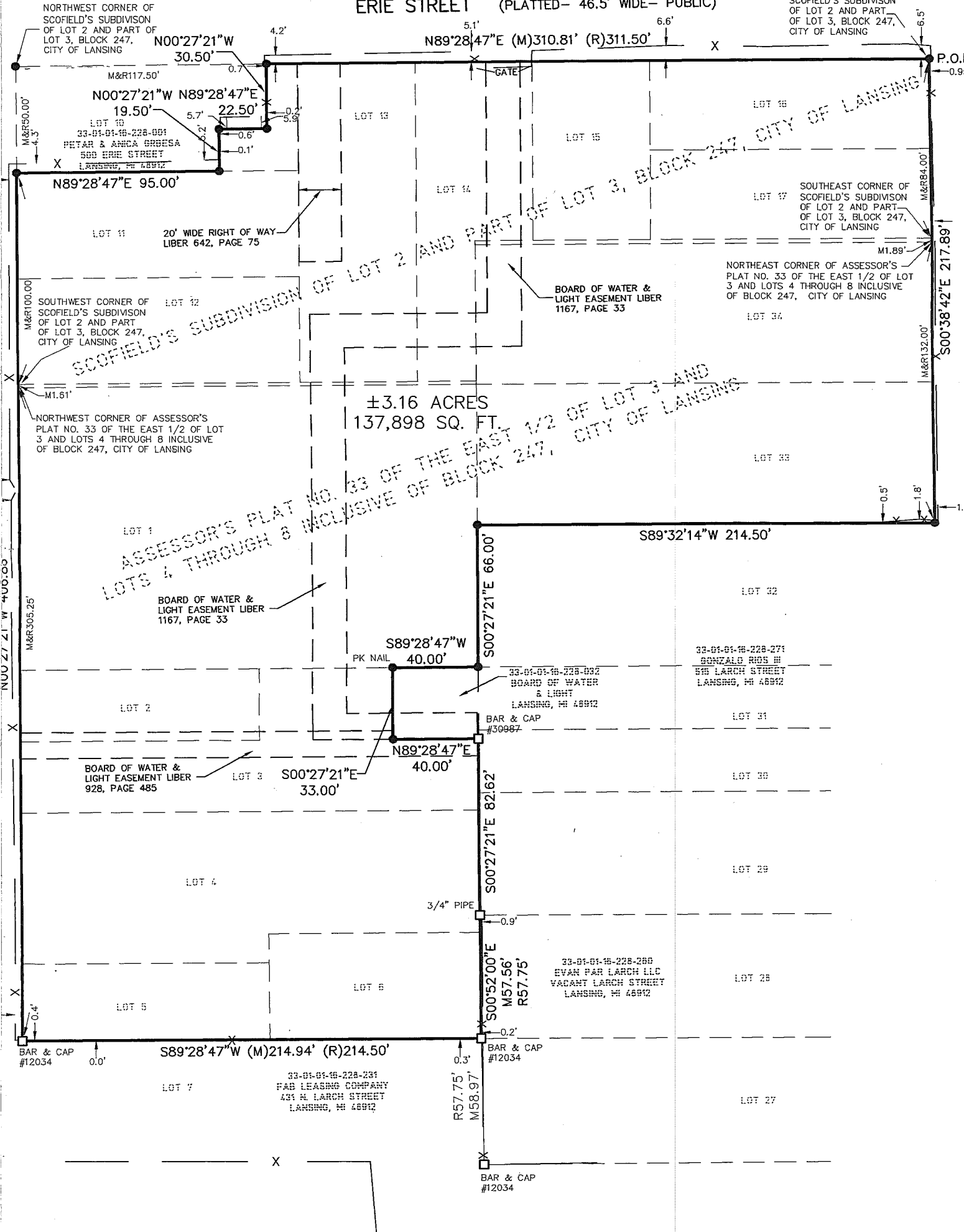


ERIE STREET (PLATTED- 46.5' WIDE- PUBLIC)

SCOFIELD'S SUBDIVISION
OF LOT 2 AND PART
OF LOT 3, BLOCK 247,
CITY OF LANSING

NORTHWEST CORNER OF
SCOFIELD'S SUBDIVISION
OF LOT 2 AND PART OF
LOT 3, BLOCK 247,
CITY OF LANSING



LEGEND

- = SET 5/8" "KEBS" BAR & CAP
- = FOUND IRON AS NOTED
- = DEED LINE
- = DISTANCE NOT TO SCALE